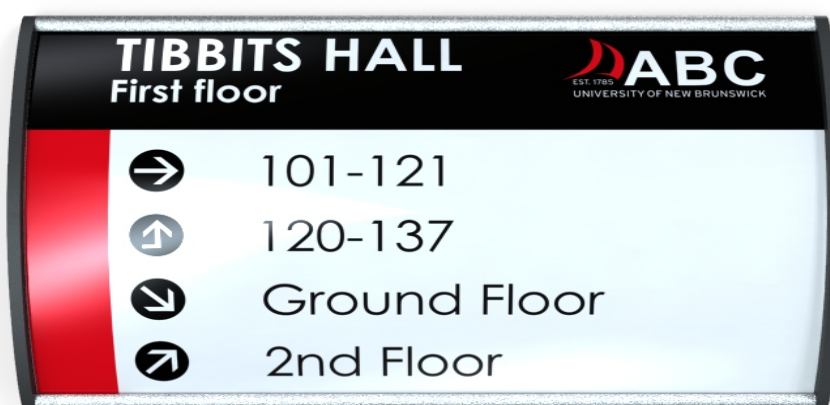




Room ID

PC Series Sign Frame with Removable Clear cover Landscape



Description:

Room ID with easy change over graphics. 
Optional divided clear covers - See pc Directories frame guide.
Available in either portrait or landscape orientation. Landscape Shown here.
Frames sold assembled but without graphics.
Braille & tactile available on frames larger than our pc120.

Details:

pc curved aluminum profile with side mounted end caps.
Convenient mounting holes for installation on all frames larger than 144 square inches. (12" x 12").
Clear or black anodized finishes for frames, end caps from pc40 - pc1200.
Grey or black plastic end caps available. pc40 - pc300.
Available with d/s tape upon request.

Dimensions:

pc frame widths available: pc40, pc60, pc80, pc100, pc120, pc150, pc200, pc Letter, pc11, pc300, pc17, pc400, pc500, pc600, pc700, pc800, pc900, pc1000, pc1100, pc1200
Lengths available: 1.5" - 96"

Extensia International Systems Inc.

PH 1.866.275.1996 EMAIL sales@extensiasign.com ADDRESS 41 Proton Street S., P.O. Box 760, Dundalk, ON., N0C 1B0

www.extensiasign.com



2

1

B

B



A

A



2

1

3"/ 80



WFL69

4"/ 100



WFL70

5"/ 120



WFL71

6"/150



WFL72

8.5"/225



WFL73

10"/250



WFL74

11"/279



WFL75

12"/300



WFL76

PC40

4"/100



WFL1

6"/150



WFL2

8"/200



WFL3

10"/250



WFL4

12"/300



WFL5

14"/350



WFL6

16"/400



WFL7

18"/450



WFL8

PC60

6"/ 150



WFL10

8"/ 200



WFL11

10"/250



WFL12

12"/300



WFL13

14"/350



WFL14

16"/400



WFL15

18"/450



WFL16

20"/500



WFL17

PC80

10"/250



WFL18

12"/300



WFL19

14"/350



WFL20

16"/ 400



WFL21

18"/450



WFL22

20"/500



WFL23

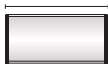
22"/550



WFL24

PC100

10"/250



WFL25

12"/ 300



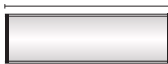
WFL26

14"/350



WFL27

16"/400



WFL28

20"/500



WFL30

24"/600



WFL31

PC120

12"/300



WFL32

14"/350



WFL33

16"/400



WFL34

20"/500



WFL35

24"/600



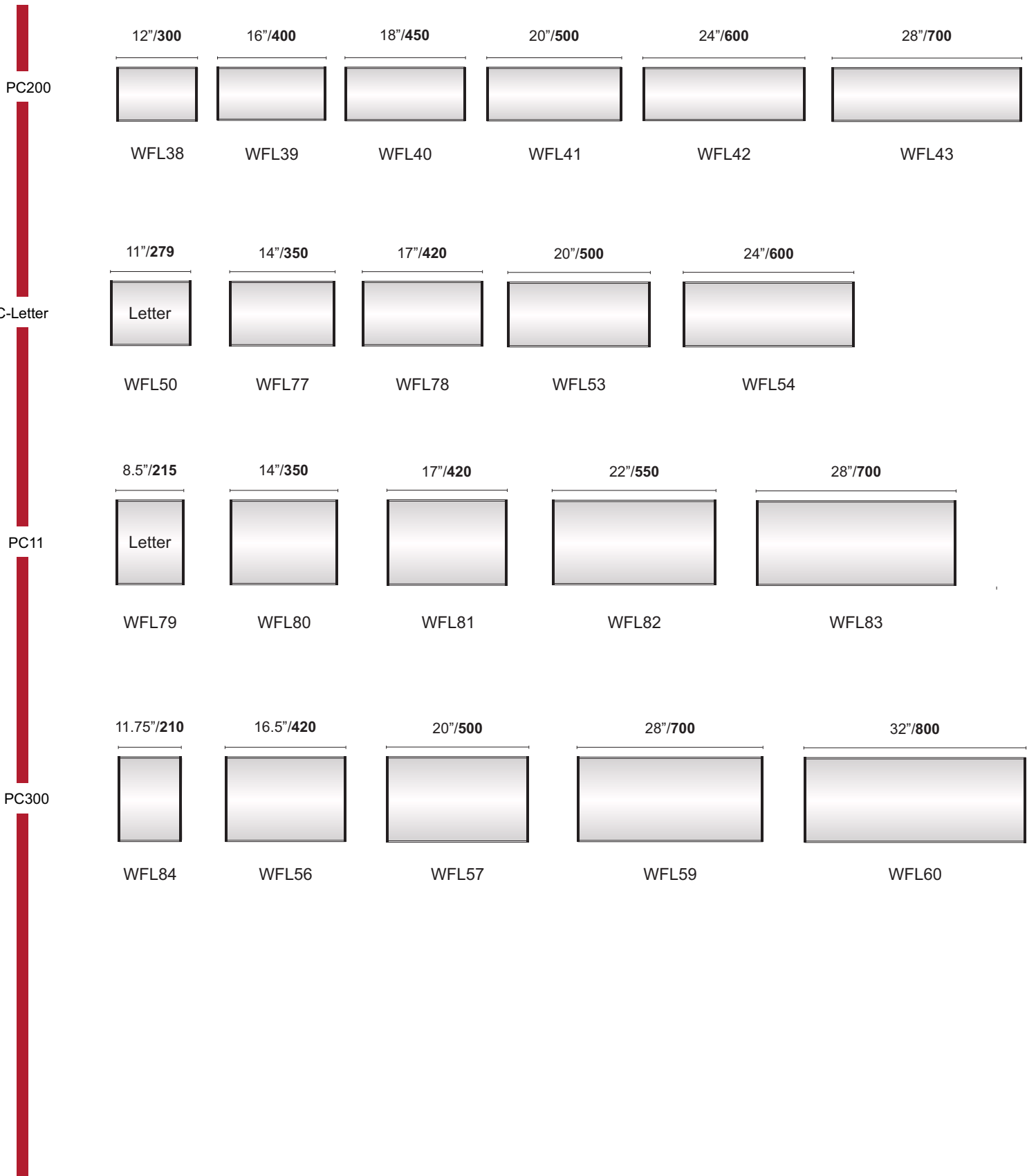
WFL36

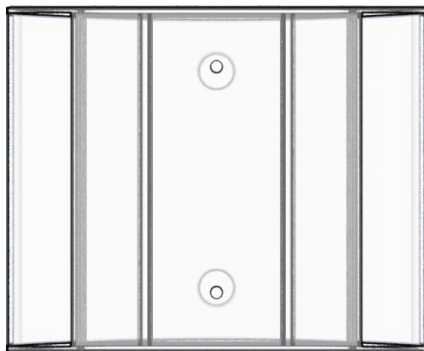
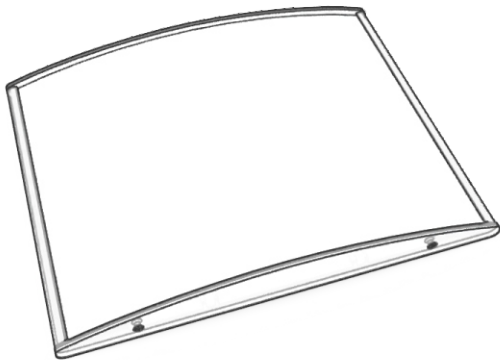
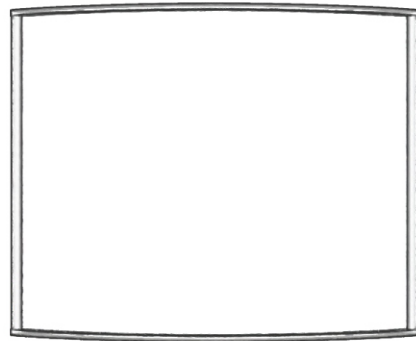
26"/650



WFL37

PC150



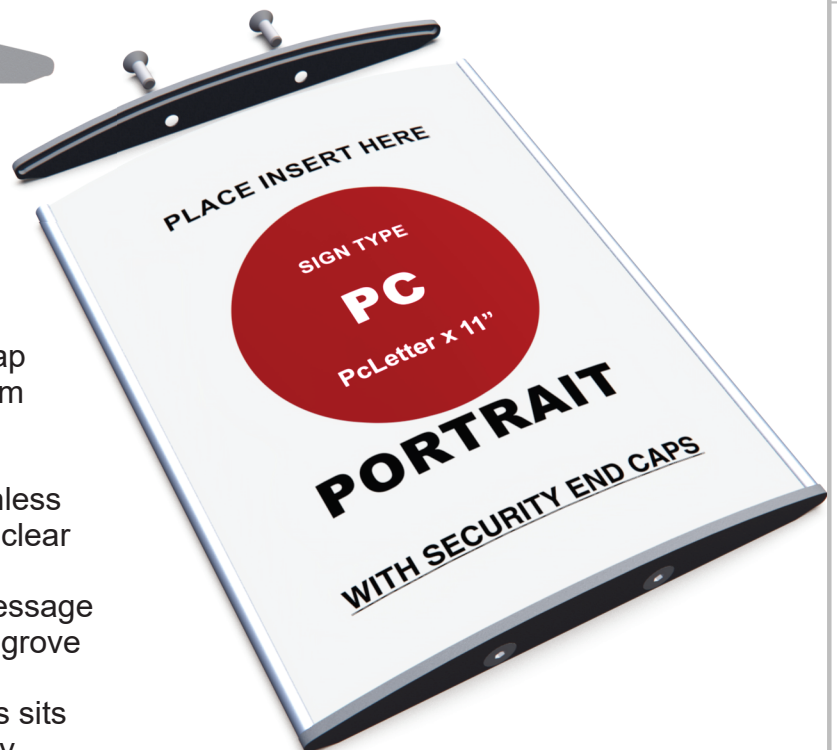




Security End Caps

pc Sign frames available with metal end caps featuring a slotted groove on top end cap which surrounds the lens on three sides which prevents unwanted lens removal and vandalism.

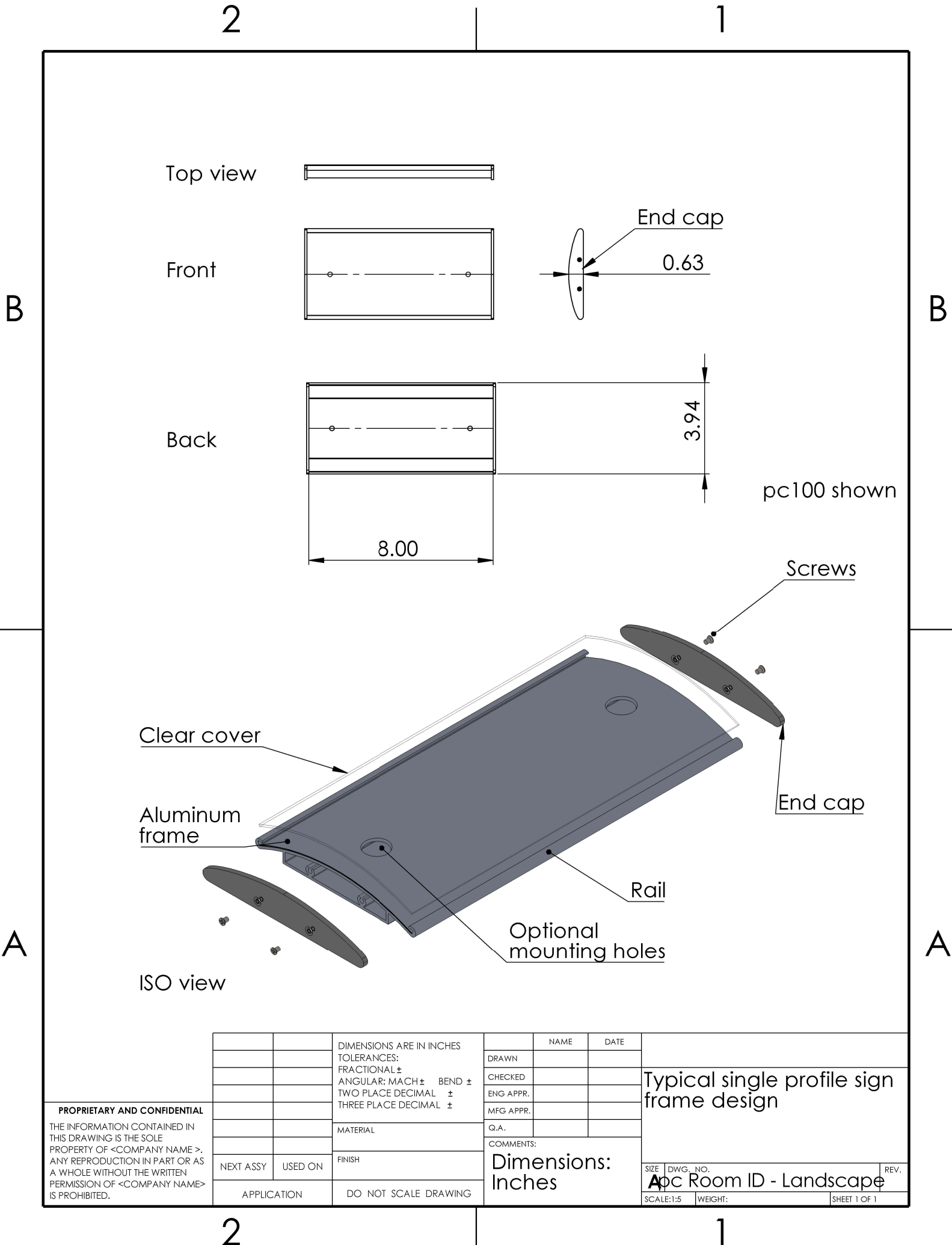
Lenses without a security end cap are only held in place on two sides which allows for easy message changes with lens removal tool (suction cup).



Machined groove in an aluminum end cap retains lens and message schedule from being vandalized.

To replace message schedule:

1. Remove top end cap of the two stainless screws and slide out old message and clear cover.
2. Repeat in reverse order with new message schedule ensuring clear cover sits into groove in the end cap all while ensuring end caps sits flush against the frame during assembly.



PROPRIETARY AND CONFIDENTIAL
THE INFORMATION CONTAINED IN THIS DRAWING IS THE SOLE PROPERTY OF <COMPANY NAME>. ANY REPRODUCTION IN PART OR AS A WHOLE WITHOUT THE WRITTEN PERMISSION OF <COMPANY NAME> IS PROHIBITED.

		DIMENSIONS ARE IN INCHES TOLERANCES: FRACTIONAL ± ANGULAR: MACH ± BEND ± TWO PLACE DECIMAL ± THREE PLACE DECIMAL ±
		MATERIAL
		FINISH
NEXT ASSY	USED ON	
APPLICATION		DO NOT SCALE DRAWING

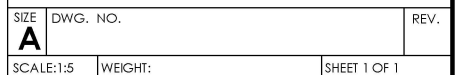
	NAME	DATE
DRAWN		
CHECKED		
ENG APPR.		
MFG APPR.		
Q.A.		
COMMENTS:		
Dimensions: Inches		

Typical single profile sign frame design		
SIZE	DWG. NO.	REV.
ApC Room ID - Landscape		
SCALE:1:5	WEIGHT:	SHEET 1 OF 1

1



A



1

2

1

Tactile Options:
Primary colors & brushed metals.
Pantone® paint matching upon request.

Raster braille Options:
black, clear, white



1/32" tactile

Raster braille



1/16" (1.5mm) sign frame insert, non-glare clear cover or alternative

<p>PROPRIETARY AND CONFIDENTIAL</p> <p>THE INFORMATION CONTAINED IN THIS DRAWING IS THE SOLE PROPERTY OF <COMPANY NAME>. ANY REPRODUCTION IN PART OR AS A WHOLE WITHOUT THE WRITTEN PERMISSION OF <COMPANY NAME> IS PROHIBITED.</p>			DIMENSIONS ARE IN INCHES TOLERANCES: FRACTIONAL ± ANGULAR: MACH ± BEND ± TWO PLACE DECIMAL ± THREE PLACE DECIMAL ±		NAME	DATE	Typical washroom sign layout				
					DRAWN			Available on all frames larger than pc120, 120mm/5".			
					CHECKED						
					ENG APPR.						
					MFG APPR.						
				Q.A.							
			MATERIAL	COMMENTS:							
	NEXT ASSY	USED ON	FINISH								
	APPLICATION		DO NOT SCALE DRAWING		SIZE					I_5mm lens - Universal Washroom 6x6 -	
				SCALE:1:5		WEIGHT: Landscape				SHEET 1 OF 1	

2

1



Raster® Braille benefits:

- Easy to read, perfectly rounded, uniform Braille dots
- Looks great
- Dome-shaped Raster® spheres meet current ADA and ANSI guidelines
- Durable and vandal resistant



RASTER® METHOD OF BRAILLE



Insist on the clean look of Raster® Braille

The Raster® Method has quickly become the preferred process for producing ADA-compliant Braille. Fabrication is fast and easy, and the perfectly rounded Braille dots have a clean uniform appearance. Raster® Braille can be used in almost any material, allowing greater flexibility in choice of material substrates as well as design options.

Features:

- Raster® Braille meets all of the latest federal ADA guidelines for dot dimension, spacing, height, and shape.
- Raster® Braille complies with ANSI A117.1.
- Raster® Braille complies with California Title 24 standards.
- Raster® Braille is weatherproof in almost any environment.
- Raster® Braille is attractive in appearance and easy to read.

Colors and Materials:

Raster® spheres are available in UV-stable acrylic. Use clear Raster® spheres for practically invisible Braille, or use a contrasting color and the Braille becomes a design element. Raster® spheres are available in the following materials and colors:

- Black acrylic
- White acrylic
- Clear acrylic

The Raster® Method is a licensed, patented process.

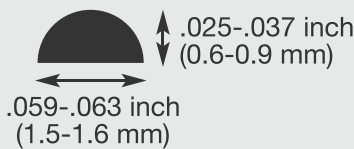
Raster® Method Braille Process

Raster® Braille meets the most recent Standards for The Accessible Canada Act and U.S.A. Federal standards

Tactile characters must be accompanied by Grade 2 Braille.

- Braille shall have a domed or rounded shape.
- Braille shall be located below corresponding text.
- If text is multi-lined, Braille shall be placed below the entire text.
- Braille shall be separated by 3/8 inch (9.5 mm) minimum from tactile characters, raised borders, or decorative elements.
- Braille is required to be lowercase. The indication of uppercase letter(s) shall only be used for proper nouns and names, individual letters of the alphabet, initials, acronyms, or before the first word of sentences.
- Dot Height: 0.025-0.037 inch (0.6-0.9 mm)
- Dot base diameter: 0.059-0.063 inch (1.5-1.6 mm)
- Distance between any two dots in same cell, center to center: 0.090-0.100 inch (2.3-2.5 mm)
- Distance between corresponding dots in adjacent cells, center to center: 0.241-0.300 inch (6.1-7.6 mm)
- Distance between corresponding dots from one cell to the cell directly below, center to center: 0.395-0.400 inch (10.0-10.2 mm)

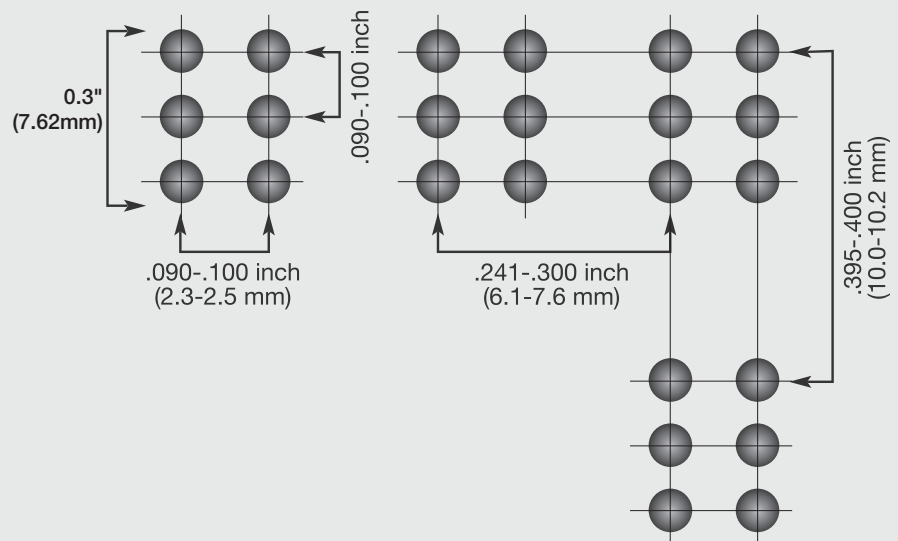
IMPORTANT CONSIDERATIONS:
When producing signs, the Braille message should accurately represent the tactile message. Spacing changes the meaning of letters and numbers. It is important to use an accurate translator such as the Duxbury Braille Translator. It is also very important to proofread the Braille translation to ensure accuracy.



Braille dots shall have a domed or rounded shape.



Braille is made up of cells. Each cell contains six dots; three on the left and three on the right. They are numbered one through six as shown here. It is essential that the dots are uniform in size and in the appropriate position in order for the Braille reader to understand the message.



RASTER® BRAILLE MEETS THE LATEST U.S.A. STANDARDS

STANDARDS	Dot Shape	Dot Height	Dot Base Diameter	Inter-cell Spacing	Cell to cell Spacing
2010 ADA (ADAAG)	✓	✓	✓	✓	✓
ANSI A117.1	✓	✓	✓	✓	✓
California Title 24	✓	✓	✓	✓	✓

Raster® Braille complies with all current federal ADA standards (ADAAG), building code standards (ANSI), as well as California Title 24 standards.

The Raster® Method of Braille can be used with any computerized sign engraving or routing system that includes a Grade 2 Braille translator and a single-point drill function. For more information on producing Raster® Braille, contact us at 612-377-9156.



Product Guide

PC Series Sign Frame with Removable Clear cover Portrait & Landscape

pc200 x 3"
sign frame

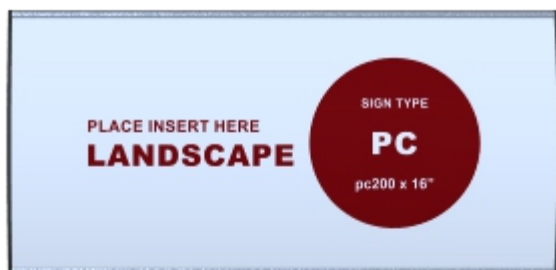


pc200 x 8"
d/s projecting

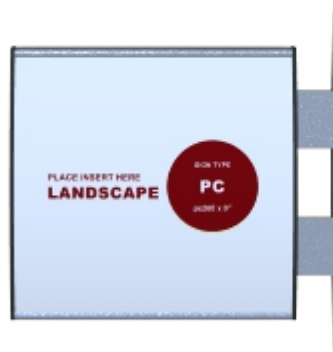


Portrait Format:
End caps top & bottom
of sign frame

pc200 x 16"
sign frame



pc200 x 8"
d/s projecting



Landscape Format:
End caps on both sides
of sign frame



Extrusion Style	Extrusion Width	Insert Size
single profile extruded frames		
pc40	1.57"	1.45"/37mm
pc60	2.36"	2.26"/58mm
pc80	3.14"	3.05"/78mm
pc100	3.93"	3.88"/98mm
pc120	4.72"	4.61"/117mm
pc150	5.90"	5.78"/147mm
pc200	7.87"	7.72"/196mm
pc LETTER	8.70"	8.50"/217mm



Extrusion Style	Extrusion Width	Insert Size
multi-profile extruded frames		
pc11	11.10"	11"/279mm
pc300	11.81"	11.69"/297mm
pc14	14.16"	14"/356mm
pc400	15.74"	15.61"/397mm
pc17	17.15"	17"/432mm
pc500	19.68"	19.59"/498mm
pc22	22.08"	22"/559mm
pc600	23.62"	23.52"/598mm
pc700	27.70"	27.56"/700mm
pc800	31.50"	31.43"/799mm
pc900	35.50"	35.40"/899mm
pc1000	39.37"	39.31"/999mm
pc1100	43.44"	43.25"/1099mm
pc1200	47.31"	47.19"/1199mm

