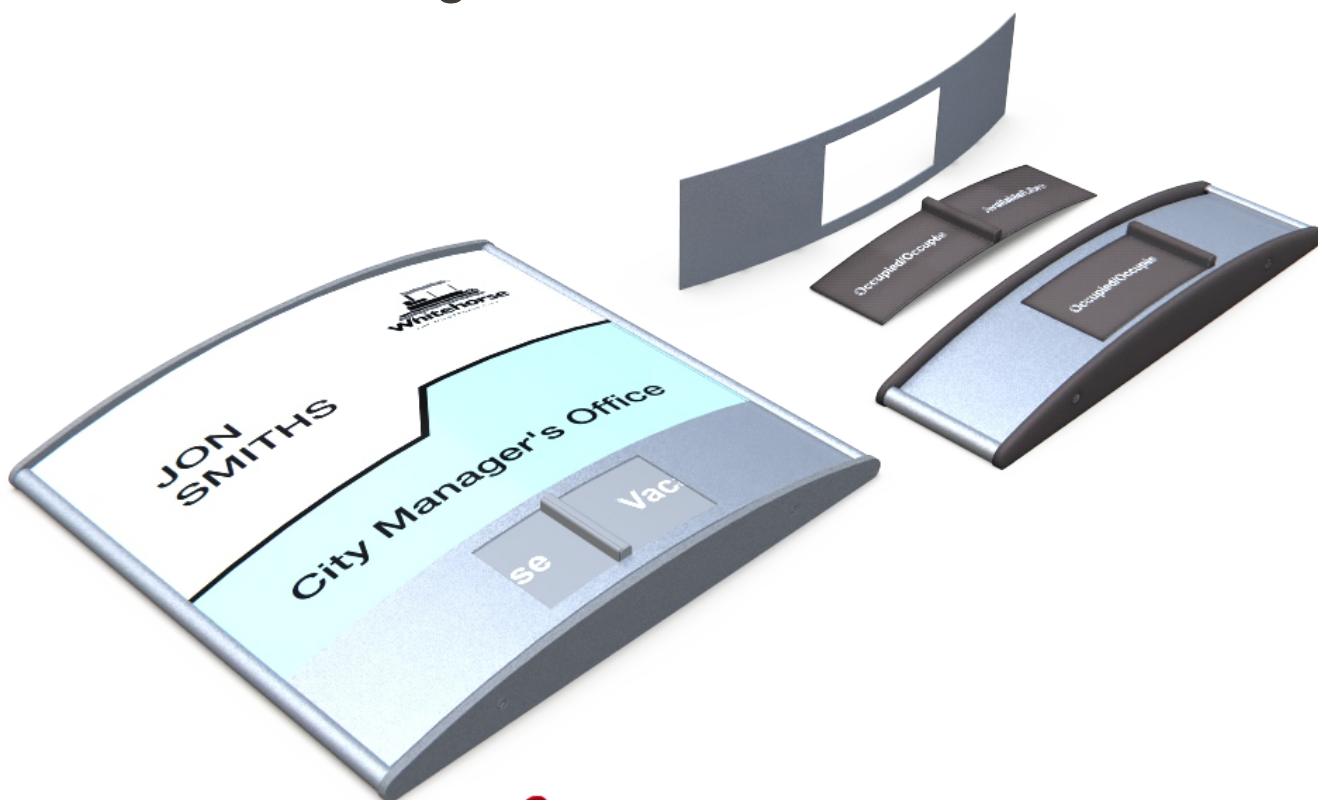




PC Slider

PC series sign frame with removable blades



Description:

Room ID centre window slider.
Available with or without a clear cover header.
Available with or without a header and a divider strip.
Frames sold assembled but without graphics.

Details:

pc curved aluminum profile with top and bottom end caps.
Window slider in grey or black plastic with contrasting graphics.
Clear and black anodized frame finishes with optional grey or black plastic end caps to match.

Dimensions:

pc Frame widths available: pc Letter, pc11, pc300.
Slider 2"h.
Heights available: 3" - 96"

Extensia International Systems Inc.

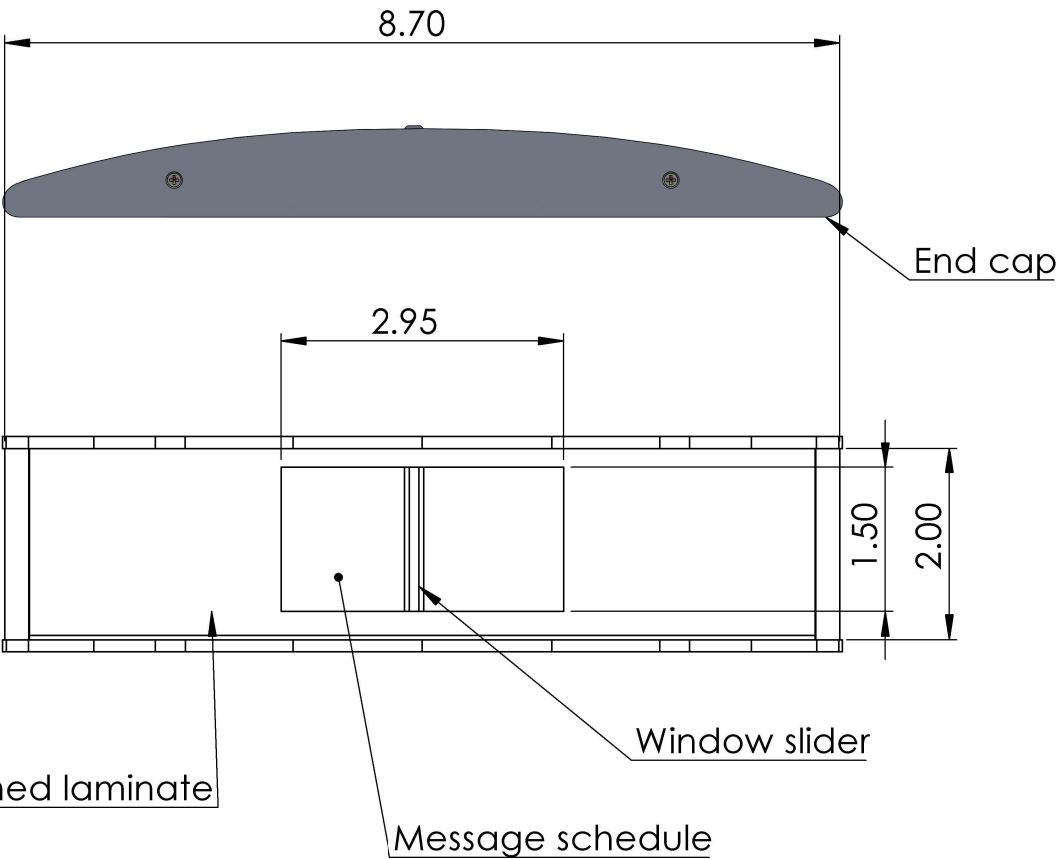
PH 1.866.275.1996 EMAIL sales@extensiasign.com ADDRESS 41 Proton Street S., P.O. Box 760, Dundalk, ON., N0C 1B0

www.extensiasign.com



pc-Letter x 2" sign frame and window slider

Top view



Front View

Side view

PROPRIETARY AND CONFIDENTIAL
THE INFORMATION CONTAINED IN THIS DRAWING IS THE SOLE PROPERTY OF <COMPANY NAME>. ANY REPRODUCTION IN PART OR AS A WHOLE WITHOUT THE WRITTEN PERMISSION OF <COMPANY NAME> IS PROHIBITED.

		DIMENSIONS ARE IN INCHES TOLERANCES: FRACTIONAL ± ANGULAR: MACH ± BEND ± TWO PLACE DECIMAL ± THREE PLACE DECIMAL ±
		MATERIAL
		FINISH
NEXT ASSY	USED ON	
APPLICATION		DO NOT SCALE DRAWING

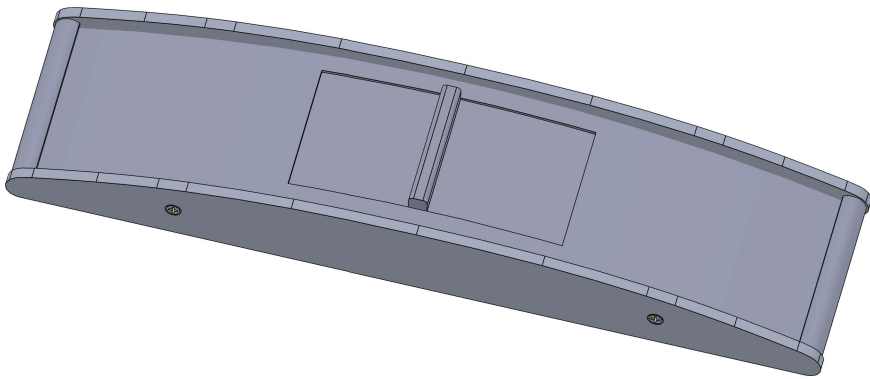
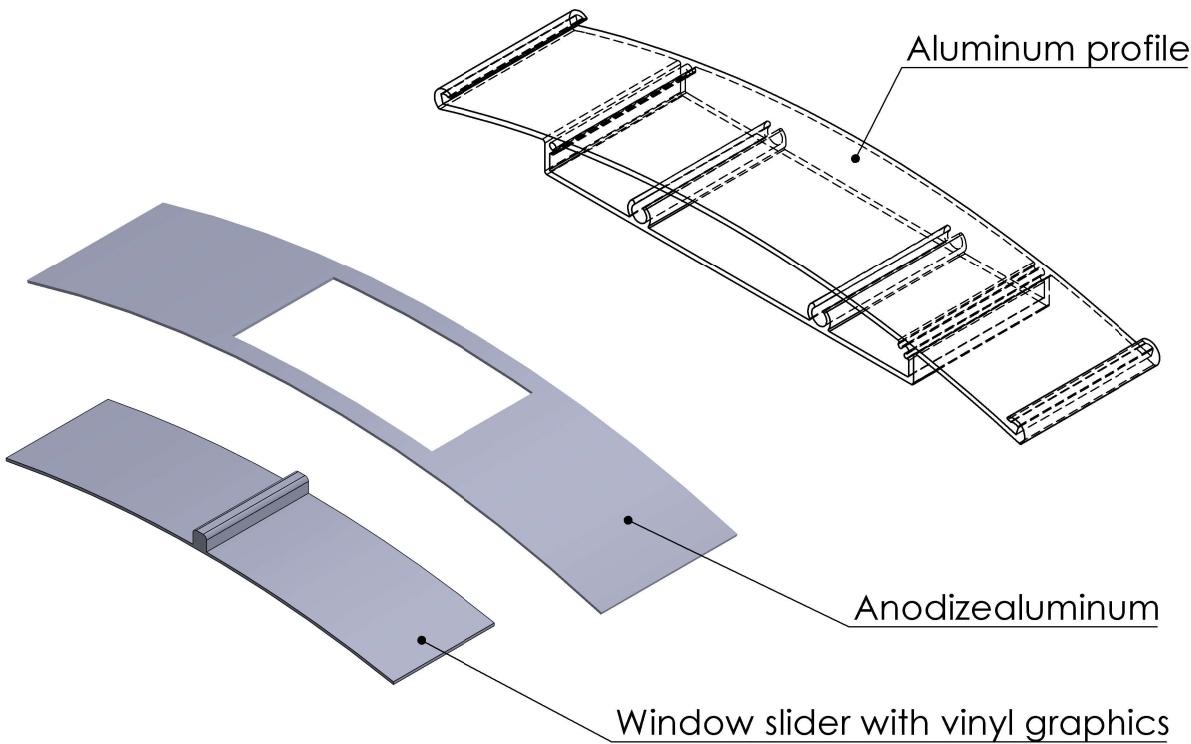
	NAME	DATE
DRAWN		
CHECKED		
ENG APPR.		
MFG APPR.		
Q.A.		
COMMENTS:		

2.85" x 1.5"h window		
pcLetter Sign Frame with slider		
SIZE A	DWG. NO.	REV.
SCALE:1:10	WEIGHT:	SHEET 1 OF 2

2

1

pc-Letter x 2" sign frame and window slider



ISO view

PROPRIETARY AND CONFIDENTIAL
THE INFORMATION CONTAINED IN THIS DRAWING IS THE SOLE PROPERTY OF <COMPANY NAME>. ANY REPRODUCTION IN PART OR AS A WHOLE WITHOUT THE WRITTEN PERMISSION OF <COMPANY NAME> IS PROHIBITED.

		DIMENSIONS ARE IN INCHES TOLERANCES: FRACTIONAL ± ANGULAR: MACH ± BEND ± TWO PLACE DECIMAL ± THREE PLACE DECIMAL ±			
		MATERIAL			
		FINISH			
NEXT ASSY	USED ON				
APPLICATION		DO NOT SCALE DRAWING			

	NAME	DATE
DRAWN		
CHECKED		
ENG APPR.		
MFG APPR.		
Q.A.		
COMMENTS:		

2.85" x 1.5"h window		
pcLetter Sign Frame with slider		
SIZE A	DWG. NO.	REV.
SCALE:1:10	WEIGHT:	SHEET 2 OF 2

2

1

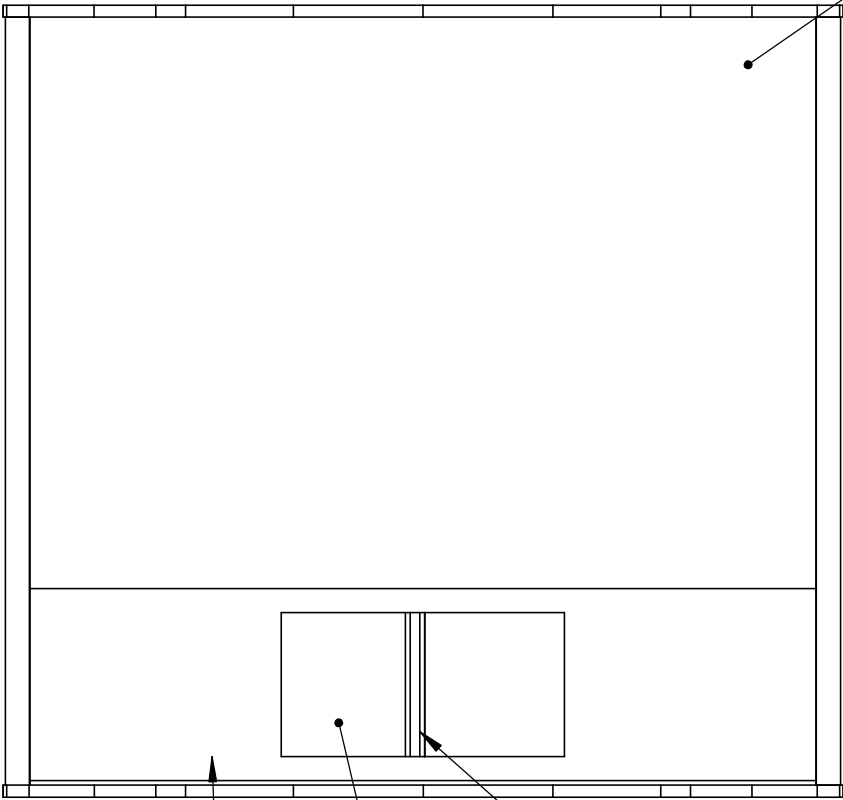
pc-Letter x 8" sign frame with a 6" header and bottom slider



Top view

End cap

Clear cover



Front View

Window slider

Brushed laminate

Message schedule



Side view

PROPRIETARY AND CONFIDENTIAL
THE INFORMATION CONTAINED IN THIS DRAWING IS THE SOLE PROPERTY OF <COMPANY NAME>. ANY REPRODUCTION IN PART OR AS A WHOLE WITHOUT THE WRITTEN PERMISSION OF <COMPANY NAME> IS PROHIBITED.

		DIMENSIONS ARE IN INCHES TOLERANCES: FRACTIONAL \pm ANGULAR: MACH \pm BEND \pm TWO PLACE DECIMAL \pm THREE PLACE DECIMAL \pm	
		MATERIAL	
		FINISH	
NEXT ASSY	USED ON		
APPLICATION		DO NOT SCALE DRAWING	

	NAME	DATE
DRAWN		
CHECKED		
ENG APPR.		
MFG APPR.		
Q.A.		
COMMENTS:		

2.85" x 1.5"h window

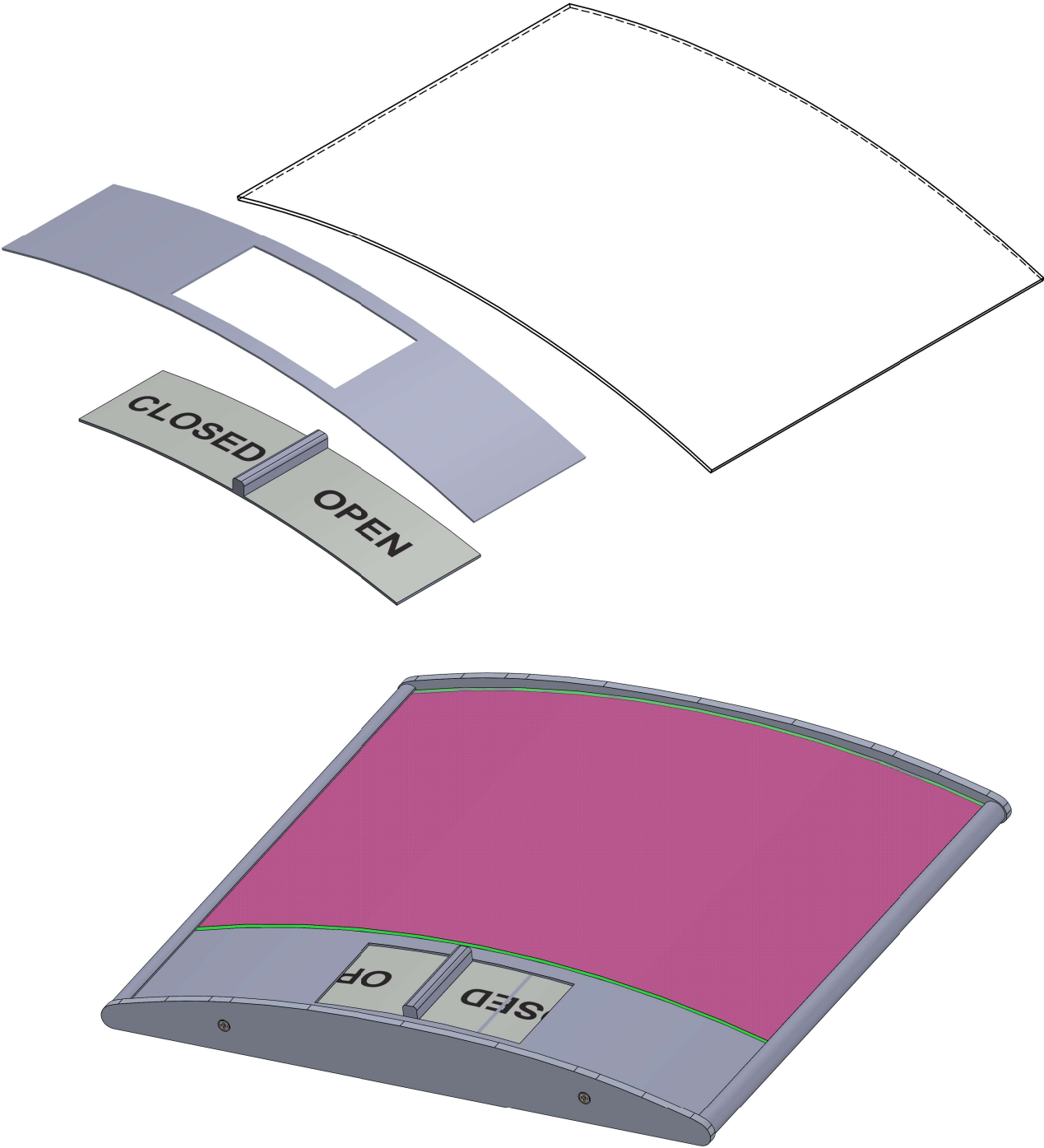
pcLetter Sign Frame with slider

SIZE	DWG. NO.	REV.
A		
SCALE:1:10	WEIGHT:	SHEET 1 OF 2

2

1

pc-Letter x 8" sign frame with a 6" header and bottom slider



B

B

A

A

PROPRIETARY AND CONFIDENTIAL
THE INFORMATION CONTAINED IN THIS DRAWING IS THE SOLE PROPERTY OF <COMPANY NAME>. ANY REPRODUCTION IN PART OR AS A WHOLE WITHOUT THE WRITTEN PERMISSION OF <COMPANY NAME> IS PROHIBITED.

		DIMENSIONS ARE IN INCHES TOLERANCES: FRACTIONAL ± ANGULAR: MACH ± BEND ± TWO PLACE DECIMAL ± THREE PLACE DECIMAL ±		NAME	DATE	2.85" x 1.5"h window pcLetter Sign Frame with slider			
			DRAWN						
			CHECKED						
			ENG APPR.						
			MFG APPR.						
		MATERIAL	Q.A.			REV.			
		FINISH	COMMENTS:						
NEXT ASSY	USED ON								
APPLICATION		DO NOT SCALE DRAWING	SIZE A		DWG. NO.				
			SCALE:1:10		WEIGHT:		SHEET 2 OF 2		

2

1

2

1

Tactile Options:

Primary colors & brushed metals.
Pantone® paint matching upon request.

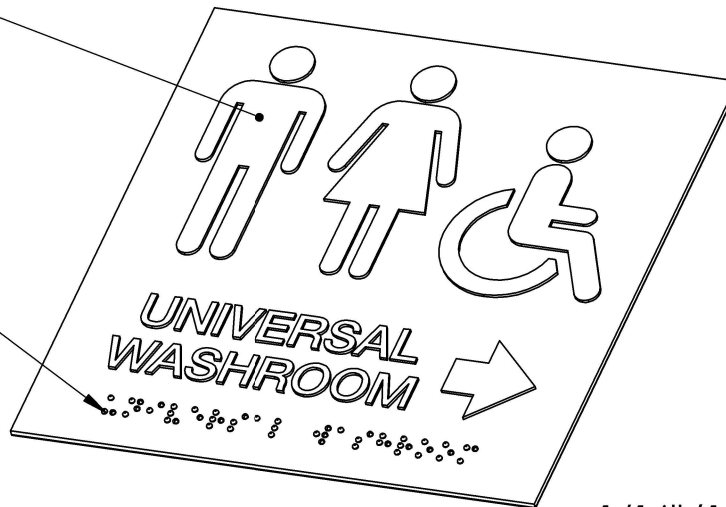
Raster braille Options:

black, clear, white



1/32" tactile

Raster braille



1/16" (1.5mm) sign frame insert, non-glare clear cover or alternative

PROPRIETARY AND CONFIDENTIAL
THE INFORMATION CONTAINED IN THIS DRAWING IS THE SOLE PROPERTY OF <COMPANY NAME>. ANY REPRODUCTION IN PART OR AS A WHOLE WITHOUT THE WRITTEN PERMISSION OF <COMPANY NAME> IS PROHIBITED.

		DIMENSIONS ARE IN INCHES TOLERANCES: FRACTIONAL ± ANGULAR: MACH ± BEND ± TWO PLACE DECIMAL ± THREE PLACE DECIMAL ±		NAME	DATE	Typical washroom sign layout			
				DRAWN			Available on all frames larger than pc120, 120mm/5".		
				CHECKED					
				ENG APPR.					
				MFG APPR.					
			Q.A.						
		MATERIAL	COMMENTS:			SIZE A	1_5mm lens - Universal Washroom 6x6 - Portrait	REV.	
		FINISH							
NEXT ASSY	USED ON								
APPLICATION		DO NOT SCALE DRAWING				SCALE:1:5	WEIGHT:	SHEET 1 OF 1	

2

1

2

1

B

B



A

A



2

1



Product Guide

PC Series Sign Frame with Removable Clear cover Portrait & Landscape

22 pc frame widths available and custom cut to suit your message schedule and project details. Frames can be orientated with curve running either horizontal (portrait) or vertical (landscape). Braille & tactile compatible with all frames larger than our pc120. Variety of end cap and base plates available for desk top, projecting or free standing applications.

pc200 x 3"
sign frame

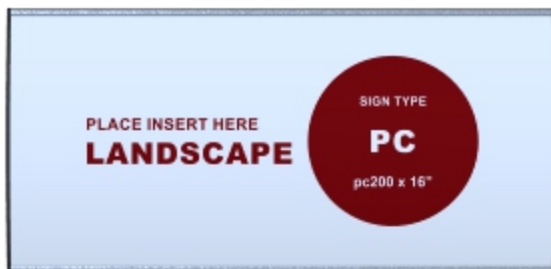


pc200 x 8"
d/s projecting

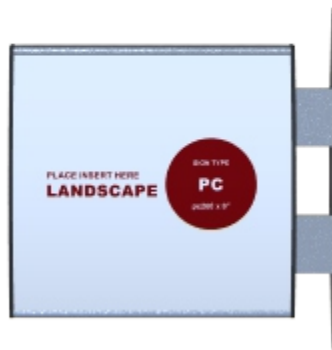


Portrait Format:
End caps top & bottom
of sign frame
horizontal curve

pc200 x 16"
sign frame



pc200 x 8"
d/s projecting



Landscape Format:
End caps on both sides
of sign frame
vertical curve



Extrusion Style	Extrusion Width	Insert Size
single profile extruded frames		
pc40	1.57"	1.45"/37mm
pc60	2.36"	2.26"/58mm
pc80	3.14"	3.05"/78mm
pc100	3.93"	3.88"/98mm
pc120	4.72"	4.61"/117mm
pc150	5.90"	5.78"/147mm
pc200	7.87"	7.72"/196mm
pc LETTER	8.70"	8.50"/217mm



Extrusion Style	Extrusion Width	Insert Size
multi-profile extruded frames		
pc11	11.10"	11"/279mm
pc300	11.81"	11.69"/297mm
pc14	14.16"	14"/356mm
pc400	15.74"	15.61"/397mm
pc17	17.15"	17"/432mm
pc500	19.68"	19.59"/498mm
pc22	22.08"	22"/559mm
pc600	23.62"	23.52"/598mm
pc700	27.70"	27.56"/700mm
pc800	31.50"	31.43"/799mm
pc900	35.50"	35.40"/899mm
pc1000	39.37"	39.31"/999mm
pc1100	43.44"	43.25"/1099mm
pc1200	47.31"	47.19"/1199mm

