




Arrow

PC Series Sign Frame with Removable Clear cover Portrait



Description:

Room ID with easy change over graphics. 
Wall or ceiling hung
Frames sold assembled but without graphics.

Details:

pc curved aluminum profile with top and bottom end caps.
Convenient mounting holes for installation.
Clear or black anodized finishes for frames and end caps.

Dimensions:

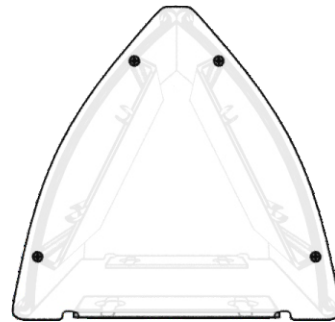
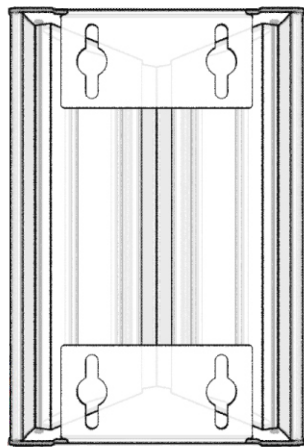
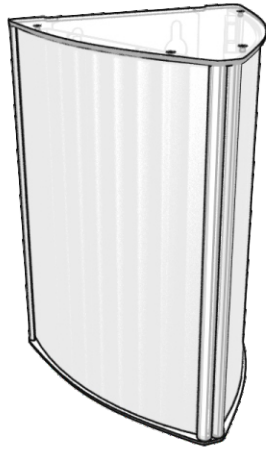
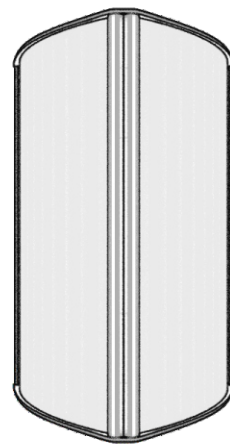
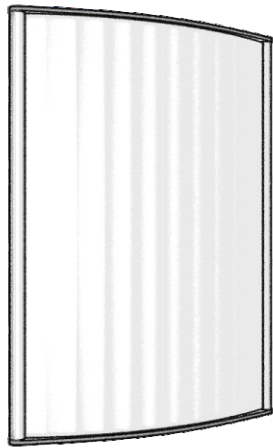
pc frame widths available: pc100, pc120, pc150, pc200, pc Letter, pc11, pc300, pc17.
Heights available: 5" - 96"

Extensia International Systems Inc.

PH 1.866.275.1996 EMAIL sales@extensiasign.com ADDRESS 41 Proton Street S., P.O. Box 760, Dundalk, ON., N0C 1B0

www.extensiasign.com





2

1

B

B



A

A



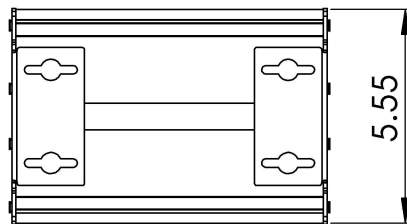
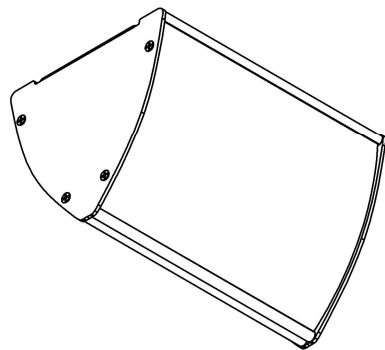
2

1

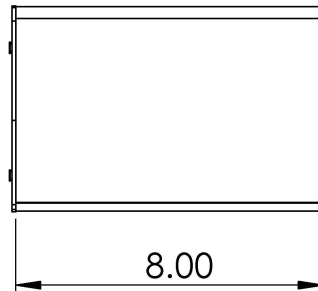
2

1

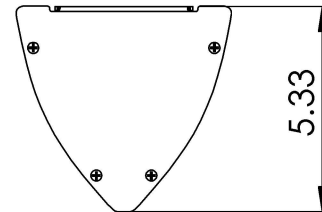
pc150 extrusion shown



Top view



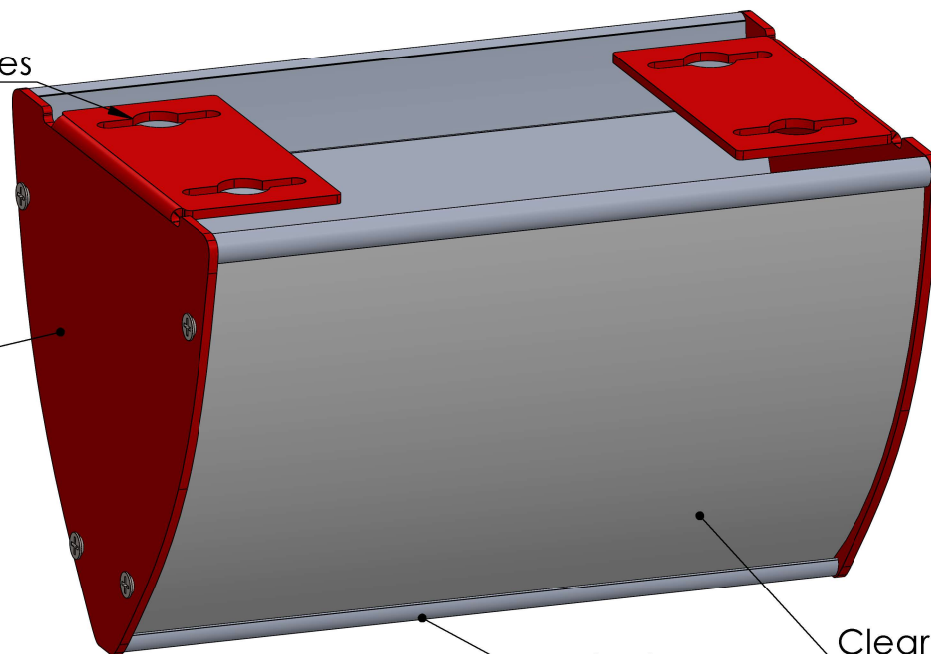
Front view



Side view

Mounting holes

End cap



Extrusion

Clear cover

PROPRIETARY AND CONFIDENTIAL
THE INFORMATION CONTAINED IN THIS DRAWING IS THE SOLE PROPERTY OF <COMPANY NAME>. ANY REPRODUCTION IN PART OR AS A WHOLE WITHOUT THE WRITTEN PERMISSION OF <COMPANY NAME> IS PROHIBITED.

| | | |
|-------------|---------|---|
| | | DIMENSIONS ARE IN INCHES TOLERANCES: FRACTIONAL ± ANGULAR: MACH ± BEND ± TWO PLACE DECIMAL ± THREE PLACE DECIMAL ± |
| | | |
| | | |
| | | |
| | | |
| | | MATERIAL |
| | | FINISH |
| NEXT ASSY | USED ON | |
| APPLICATION | | DO NOT SCALE DRAWING |

| | | |
|-----------|------|------|
| | NAME | DATE |
| DRAWN | | |
| CHECKED | | |
| ENG APPR. | | |
| MFG APPR. | | |
| Q.A. | | |
| COMMENTS: | | |

d/s wall or ceiling design

| | | |
|-----------|---------------------|--------------|
| SIZE | DWG. NO. | REV. |
| A | pc150 Generic Arrow | |
| SCALE:1:5 | WEIGHT: | SHEET 1 OF 1 |

2

1



Product Guide

PC Series Sign Frame with Removable Clear cover Portrait & Landscape

22 pc frame widths available and custom cut to suit your message schedule and project details. Frames can be orientated with curve running either horizontal (portrait) or vertical (landscape). Braille & tactile compatible with all frames larger than our pc120. Variety of end cap and base plates available for desk top, projecting or free standing applications.

pc200 x 3"
sign frame

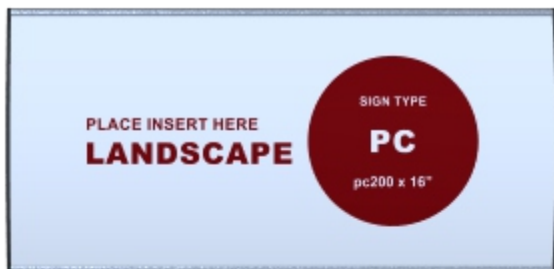


pc200 x 8"
d/s projecting

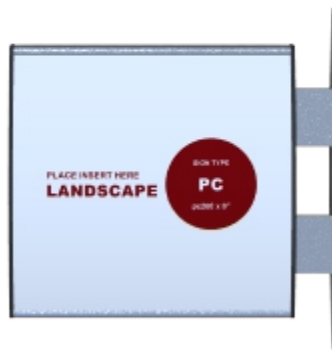


Portrait Format:
End caps top & bottom
of sign frame
horizontal curve

pc200 x 16"
sign frame



pc200 x 8"
d/s projecting



Landscape Format:
End caps on both sides
of sign frame
vertical curve



| Extrusion Style | Extrusion Width | Insert Size |
|--------------------------------|-----------------|-------------|
| single profile extruded frames | | |
| pc40 | 1.57" | 1.45"/37mm |
| pc60 | 2.36" | 2.26"/58mm |
| pc80 | 3.14" | 3.05"/78mm |
| pc100 | 3.93" | 3.88"/98mm |
| pc120 | 4.72" | 4.61"/117mm |
| pc150 | 5.90" | 5.78"/147mm |
| pc200 | 7.87" | 7.72"/196mm |
| pc LETTER | 8.70" | 8.50"/217mm |



| Extrusion Style | Extrusion Width | Insert Size |
|-------------------------------|-----------------|---------------|
| multi-profile extruded frames | | |
| pc11 | 11.10" | 11"/279mm |
| pc300 | 11.81" | 11.69"/297mm |
| pc14 | 14.16" | 14"/356mm |
| pc400 | 15.74" | 15.61"/397mm |
| pc17 | 17.15" | 17"/432mm |
| pc500 | 19.68" | 19.59"/498mm |
| pc22 | 22.08" | 22"/559mm |
| pc600 | 23.62" | 23.52"/598mm |
| pc700 | 27.70" | 27.56"/700mm |
| pc800 | 31.50" | 31.43"/799mm |
| pc900 | 35.50" | 35.40"/899mm |
| pc1000 | 39.37" | 39.31"/999mm |
| pc1100 | 43.44" | 43.25"/1099mm |
| pc1200 | 47.31" | 47.19"/1199mm |

