



Metal Slider

STANLY Series Sign Frame with Metal Slider Landscape



Description:

Stanly sign frame with easy change over graphics. Available with or without a metal slider which divides the sign for multi message schedules. Frames sold assembled but without graphics.

Details:

Aluminum sign frame, non glare clear cover with side mounted end caps.
Clear or black anodized finished frames and matching end caps from sizes ST40 - ST600.
Available with d/s tape upon request.
Clear anodized slider with options for black.

Dimensions:

Stanly frame widths available: ST40, ST60, ST80, ST100, ST120, ST150, ST200, STLetter, ST11, ST300.
Lengths available: 3" - 96"

Extensia International Systems Inc.



PH 1.866.275.1996 EMAIL sales@extensiasign.com ADDRESS 41 Proton Street S., P.O. Box 760, Dundalk, ON., N0C 1B0

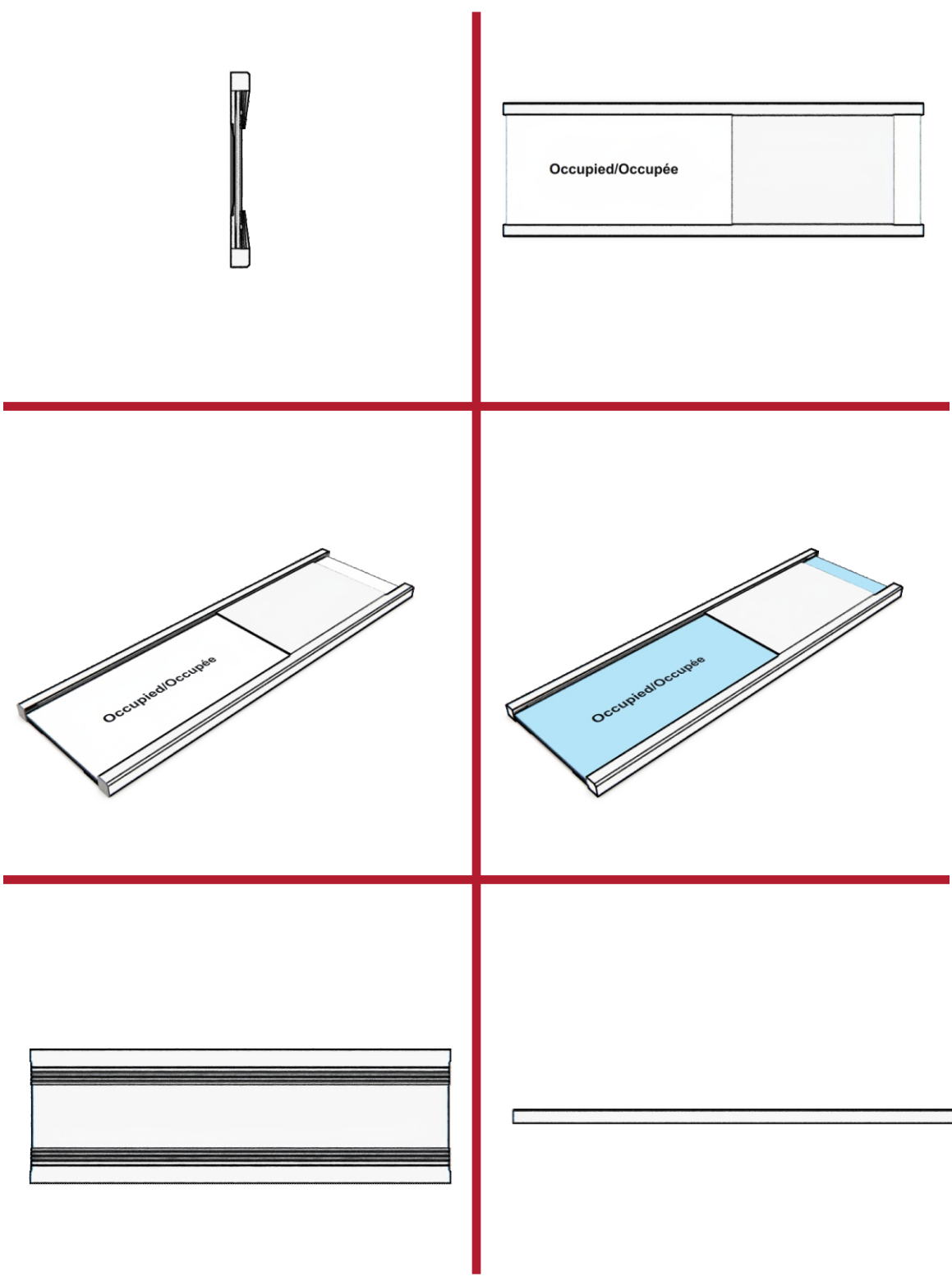
www.extensiasign.com

2

1

B

B



A

A

2

1



Product Guide

STANLY Series Sign Frame with Removable Clear cover Portrait & Landscape

16 Stanly frame widths available and custom cut to suit your message schedule and project details.

Frames can be orientated with curve running either horizontal (portrait) or vertical (landscape).

Braille & tactile compatible with all frames larger than our ST120.

Variety of end cap and base plates available for desk top, projecting, cubical or free standing applications.

Portrait Format:
End caps top & bottom
of sign frame
horizontal curve

ST150 x 6"
sign frame



Landscape Format:
End caps on both sides
of sign frame
vertical curve

ST150 x 6"
sign frame



ST150 x 6"
d/s projecting



ST150 x 6"
d/s projecting



Extrusion Style	Extrusion Width	Insert Size
ST40	1.98"/50mm	1.45"/37mm
ST60	2.75"/70mm	2.26"/58mm
ST80	3.54"/90mm	3.05"/78mm
ST100	4.41"/110mm	3.88"/98mm
ST120	5.12"/130mm	4.61"/117mm
ST150	6.30"/140mm	5.78"/147mm
ST200	8.27"/210mm	7.72"/196mm
ST-Letter	9.06"/230mm	8.50"/217mm
ST11	11.51"/293mm	11"/279mm
ST300	12.24"/310mm	11.69"/297mm
ST14	14.25"/362mm	14"/356mm
ST400	15.87"/410mm	15.61"/397mm
ST17	17.24"/438mm	17"/432mm
ST500	19.84"/510mm	19.59"/498mm
ST22	22.24"/565mm	22"/559mm
ST600	23.78"/605mm	23.52"/598mm

