



# Room ID

## ESTIVA Series Sign Frame with Removable Clear cover Landscape



### Description:

Room ID with easy change over graphics.   
Optional divided clear covers - See Estiva Directories frame guide.  
Available in either portrait or landscape orientation. Landscape Shown here.  
Frames sold assembled but without graphics.  
Braille & tactile available on frames larger than our E120.

### Details:

Estiva curved aluminum profile with side mounted end caps.  
Convenient mounting holes for instillation on all frames larger than 144 square inches. (12" x 12").  
Clear or black anodized finishes for frames and end caps from sizes E60 - E1200.  
Grey or black plastic end caps available. E60 - E300.  
Available with d/s tape upon request.

### Dimensions:

Estiva frame widths available: E60, E80, E100, E150, E200, E Letter, E11, E300, E17, E400, E500, E600, E700, E800, E900, E1000, E1100, E1200  
Heights available: 1.5" - 96"

**Extensia International Systems Inc.**



PH 1.866.275.1996 EMAIL [sales@extensiasign.com](mailto:sales@extensiasign.com) ADDRESS 41 Proton Street S., P.O. Box 760, Dundalk, ON., N0C 1B0

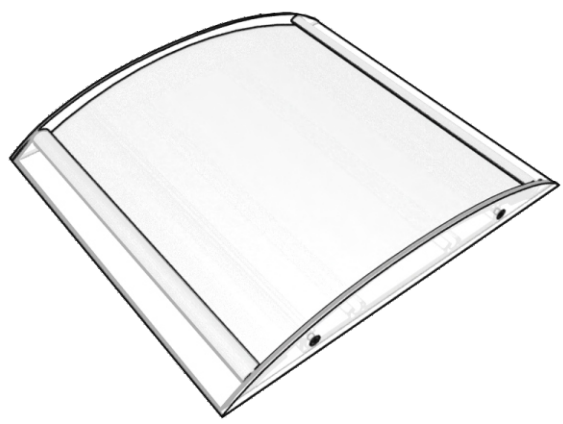
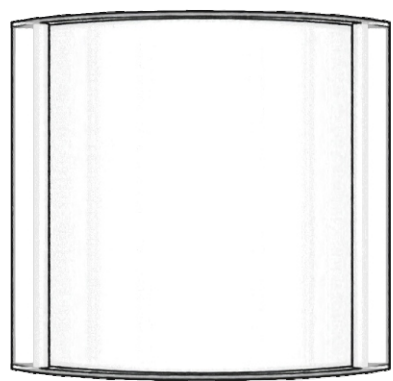
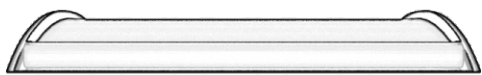
[www.extensiasign.com](http://www.extensiasign.com)

2

1

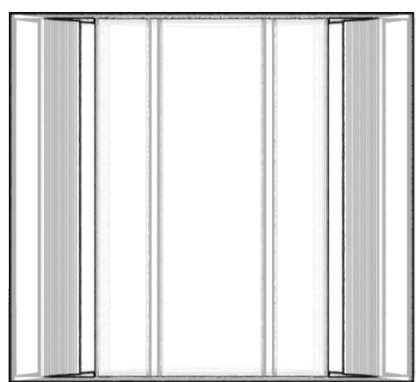
B

B



A

A



2

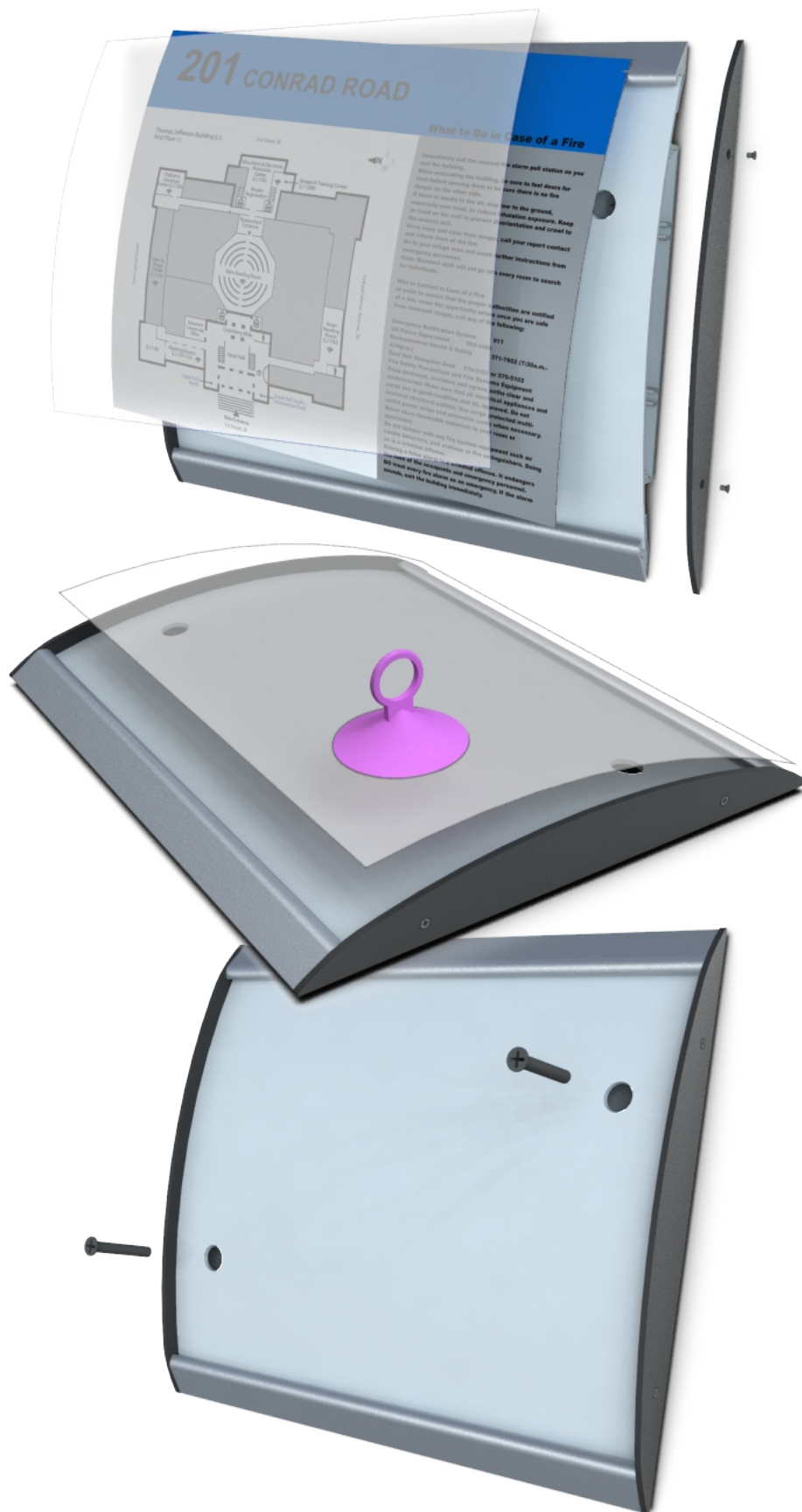
1

2

1

B

B

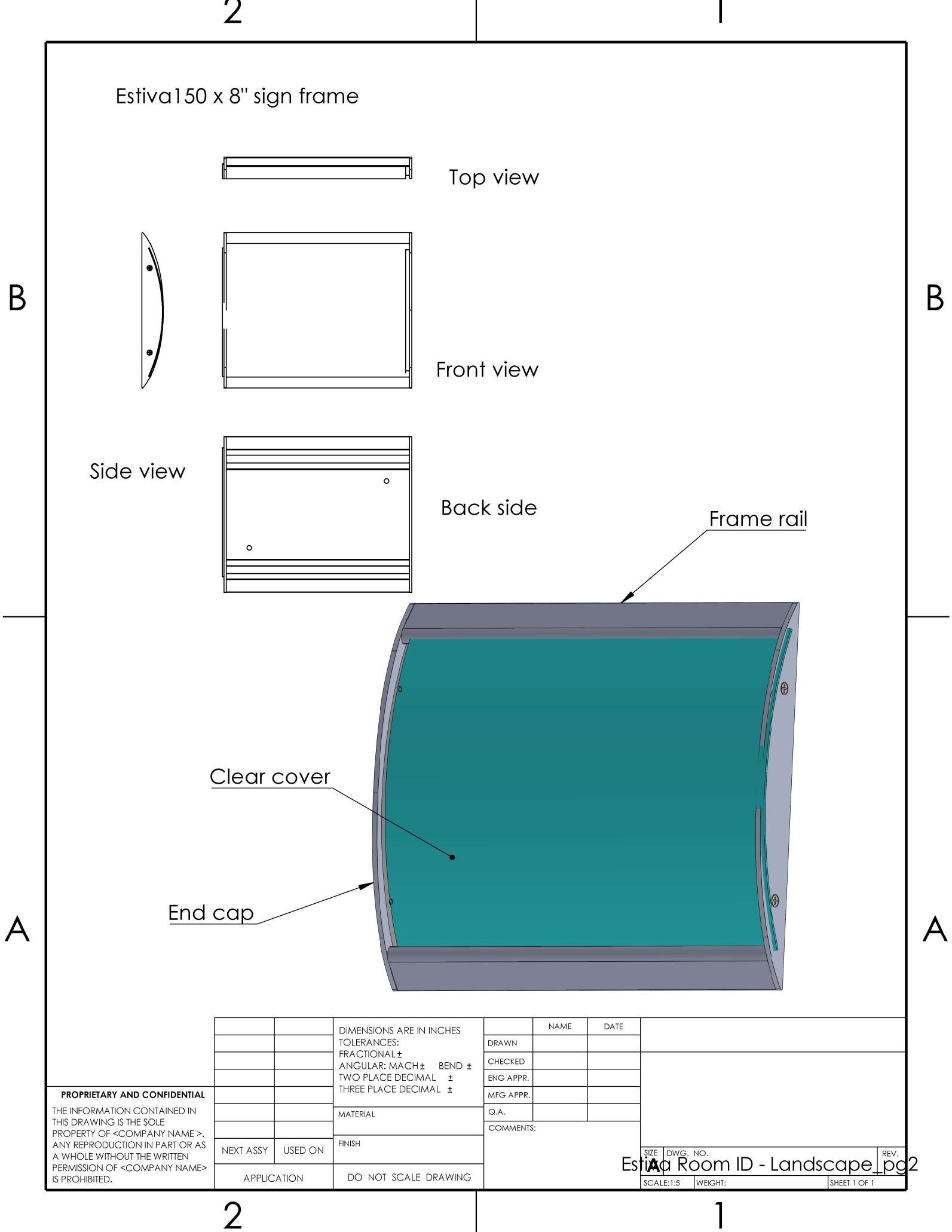


A

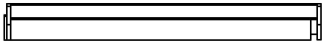
A

2

1



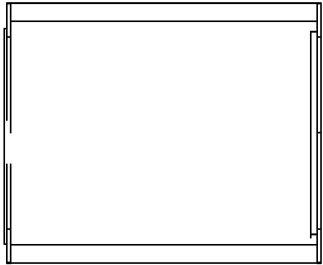
Estiva150 x 8" sign frame



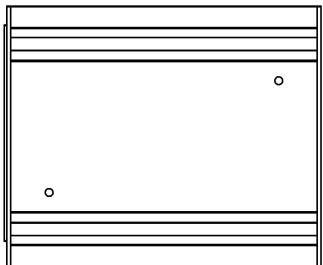
Top view



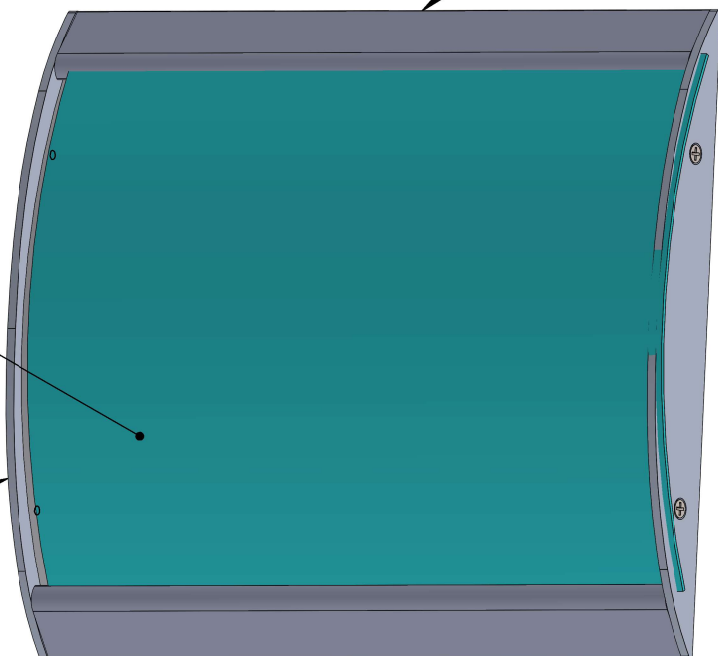
Side view



Front view



Back side



Clear cover

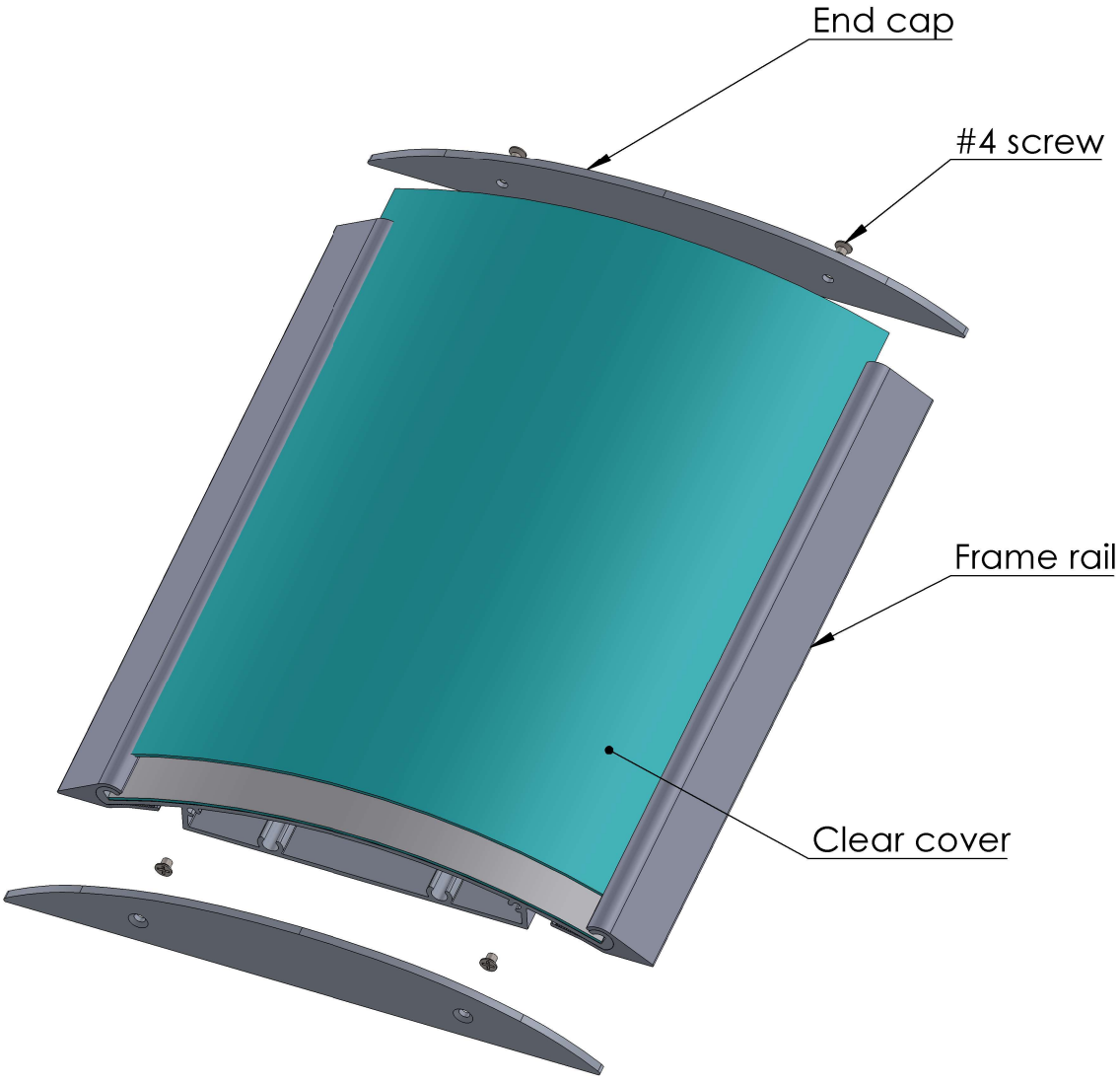
End cap

Frame rail

**PROPRIETARY AND CONFIDENTIAL**  
THE INFORMATION CONTAINED IN THIS DRAWING IS THE SOLE PROPERTY OF <COMPANY NAME>. ANY REPRODUCTION IN PART OR AS A WHOLE WITHOUT THE WRITTEN PERMISSION OF <COMPANY NAME> IS PROHIBITED.

		DIMENSIONS ARE IN INCHES TOLERANCES: FRACTIONAL ± ANGULAR: MACH ±    BEND ± TWO PLACE DECIMAL    ± THREE PLACE DECIMAL    ±		NAME	DATE			
			DRAWN					
			CHECKED					
			ENG APPR.					
			MFG APPR.					
		MATERIAL		Q.A.				
		FINISH	COMMENTS:					
NEXT ASSY	USED ON							
APPLICATION		DO NOT SCALE DRAWING	Estimate Room ID - Landscape			SIZE	DWG. NO.	REV.
						SCALE:1:5	WEIGHT:	SHEET 1 OF 1

Estiva150 x 8" sign frame



**PROPRIETARY AND CONFIDENTIAL**  
THE INFORMATION CONTAINED IN THIS DRAWING IS THE SOLE PROPERTY OF <COMPANY NAME>. ANY REPRODUCTION IN PART OR AS A WHOLE WITHOUT THE WRITTEN PERMISSION OF <COMPANY NAME> IS PROHIBITED.

		DIMENSIONS ARE IN INCHES TOLERANCES: FRACTIONAL ± ANGULAR: MACH ±    BEND ± TWO PLACE DECIMAL   ± THREE PLACE DECIMAL   ±		NAME	DATE	Estiva Room ID - Landscape Exploded view_pg2
			DRAWN			
			CHECKED			
			ENG APPR.			
			MFG APPR.			
			Q.A.			REV.
		COMMENTS:				
NEXT ASSY	USED ON	FINISH				
APPLICATION		DO NOT SCALE DRAWING		SCALE:1:5    WEIGHT:    SHEET 1 OF 1		



*Raster® Braille benefits:*

- *Easy to read, perfectly rounded, uniform Braille dots*
- *Looks great*
- *Dome-shaped Raster® spheres meet current ADA and ANSI guidelines*
- *Durable and vandal resistant*



## RASTER® METHOD OF BRAILLE



### Insist on the clean look of Raster® Braille

The Raster® Method has quickly become the preferred process for producing ADA-compliant Braille. Fabrication is fast and easy, and the perfectly rounded Braille dots have a clean uniform appearance. Raster® Braille can be used in almost any material, allowing greater flexibility in choice of material substrates as well as design options.

#### Features:

- Raster® Braille meets all of the latest federal ADA guidelines for dot dimension, spacing, height, and shape.
- Raster® Braille complies with ANSI A117.1.
- Raster® Braille complies with California Title 24 standards.
- Raster® Braille is weatherproof in almost any environment.
- Raster® Braille is attractive in appearance and easy to read.

#### Colors and Materials:

Raster® spheres are available in UV-stable acrylic. Use clear Raster® spheres for practically invisible Braille, or use a contrasting color and the Braille becomes a design element. Raster® spheres are available in the following materials and colors:

- Black acrylic
- White acrylic
- Clear acrylic

*The Raster® Method is a licensed, patented process.*

# Raster® Method Braille Process

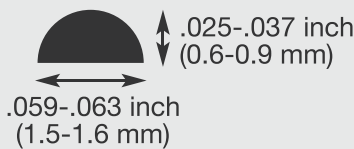
Raster® Braille meets the most recent Standards for The Accessible Canada Act and U.S.A. Federal standards

Tactile characters must be accompanied by Grade 2 Braille.

- Braille shall have a domed or rounded shape.
- Braille shall be located below corresponding text.
- If text is multi-lined, Braille shall be placed below the entire text.
- Braille shall be separated by 3/8 inch (9.5 mm) minimum from tactile characters, raised borders, or decorative elements.
- Braille is required to be lowercase. The indication of uppercase letter(s) shall only be used for proper nouns and names, individual letters of the alphabet, initials, acronyms, or before the first word of sentences.
- Dot Height: 0.025-0.037 inch (0.6-0.9 mm)
- Dot base diameter: 0.059-0.063 inch (1.5-1.6 mm)
- Distance between any two dots in same cell, center to center: 0.090-0.100 inch (2.3-2.5 mm)
- Distance between corresponding dots in adjacent cells, center to center: 0.241-0.300 inch (6.1-7.6 mm)
- Distance between corresponding dots from one cell to the cell directly below, center to center: 0.395-0.400 inch (10.0-10.2 mm)

### IMPORTANT CONSIDERATIONS:

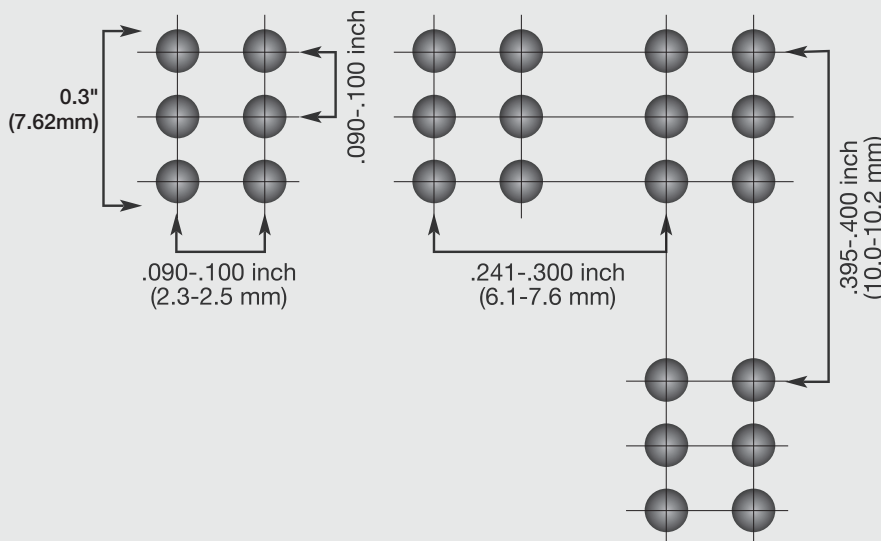
When producing signs, the Braille message should accurately represent the tactile message. Spacing changes the meaning of letters and numbers. It is important to use an accurate translator such as the Duxbury Braille Translator. It is also very important to proofread the Braille translation to ensure accuracy.



Braille dots shall have a domed or rounded shape.



Braille is made up of cells. Each cell contains six dots; three on the left and three on the right. They are numbered one through six as shown here. It is essential that the dots are uniform in size and in the appropriate position in order for the Braille reader to understand the message.



### RASTER® BRAILLE MEETS THE LATEST U.S.A. STANDARDS

STANDARDS	Dot Shape	Dot Height	Dot Base Diameter	Inter-cell Spacing	Cell to cell Spacing
2010 ADA (ADAAG)	✓	✓	✓	✓	✓
ANSI A117.1	✓	✓	✓	✓	✓
California Title 24	✓	✓	✓	✓	✓

*Raster® Braille complies with all current federal ADA standards (ADAAG), building code standards (ANSI), as well as California Title 24 standards.*

The Raster® Method of Braille can be used with any computerized sign engraving or routing system that includes a Grade 2 Braille translator and a single-point drill function. For more information on producing Raster® Braille, contact us at 612-377-9156.





# Product Guide

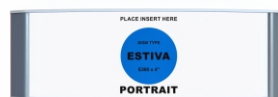
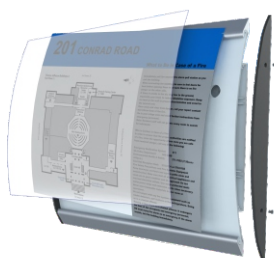
## ESITVA Series Sign Frame with Removable Clear cover Portrait & Landscape

20 pc frame widths available and custom cut to suit your message schedule and project details.

Frames can be orientated with curve running either horizontal (portrait) or vertical (landscape).

Braille & tactile compatible with all frames larger than our E150.

Variety of end cap and base plates available for desk top, projecting or free standing applications.



E200 x 4"  
sign frame



**Portrait Format:**  
End caps top & bottom  
of sign frame  
horizontal curve

pc150 x 8"  
d/s projecting

Extrusion Style	Extrusion Width	Insert Size
E60	<b>2.94"</b>	2.26"/58mm
E80	<b>3.72"</b>	3.05"/78mm
E100	<b>4.51"</b>	3.88"/98mm
E150	<b>6.78"</b>	5.78"/147mm
E200	<b>8.75"</b>	7.72"/196mm
E-Letter	<b>9.58"</b>	8.50"/217mm
E11	<b>12.28"</b>	11"/279mm
E300	<b>12.99"</b>	11.69"/297mm
E14	<b>15.34"</b>	14"/356mm
E400	<b>16.92"</b>	15.61"/397mm
E17	<b>18.69"</b>	17"/432mm
E500	<b>20.86"</b>	19.59"/498mm
E22	<b>23.26"</b>	22"/559mm
E600	<b>24.80"</b>	23.52"/598mm
E700	<b>28.88"</b>	27"/700mm
E800	<b>32.68"</b>	31.43"/799mm
E900	<b>36.68"</b>	35.4"/899mm
E1000	<b>40.55"</b>	39.31"/999mm
E1100	<b>44.61"</b>	43.25"/1099mm
E1200	<b>48.49"</b>	47.19"/1199mm



E80 x 6"  
sign frame



**Landscape Format:**  
End caps on both sides  
of sign frame  
vertical curve

pc150 x 6"  
d/s projecting